

**WATERBEACH COMMUNITY ASSOCIATION**

# Beach News

**WATERBEACH - LANDBEACH - CHITTERING**

*Winter 2016*  
*No. 249*





# DELIVERING SERVICE WITH **PRIDE**



## IT'S IN OUR NATURE.

At Carter Jonas we take pride in offering a level of service that goes beyond client expectations. We share our clients' goals, enabling our property experts to deliver more through lasting and trusting partnerships.

**Cambridge North**

T: 01223 472011

**[carterjonas.co.uk](https://carterjonas.co.uk)**

Bradshaws is now part of  
the Carter Jonas network

**Carter Jonas | BRADSHAW'S**

# BEACH NEWS

Journal of Waterbeach Community Association

[www.waterbeach.org](http://www.waterbeach.org)

'Beach News' is edited and distributed entirely by non-professional volunteers and is delivered free to residents of Waterbeach, Landbeach and Chittering four times a year.

The Association welcomes contributions on subjects of local interest but reserves the right to edit or omit articles without notice at their discretion.

Whilst every effort to ensure contents are correct on going to print the Association cannot accept responsibility for any omissions or errors.

Views expressed in articles are not necessarily those of the Association and we have no control over the nature, content and availability of any website or link referred to.

Articles for inclusion in 'Beach News' should be emailed to **[beachnews@waterbeach.org](mailto:beachnews@waterbeach.org)**

Advertisements published in 'Beach News' are subject to individual agreements between advertisers and readers and the Association cannot be held responsible for the quality of goods or services supplied.

Please refer any problems with advertisers to Jacqui Rabbett 01223 860993.

The nature of production makes publication dates uncertain but editions should appear as follows:

No. 250 (Spring) 25<sup>th</sup> February 2017 – copy by 3<sup>rd</sup> February 2017  
No. 251 (Summer) 20<sup>th</sup> May 2017 – copy by 28<sup>th</sup> April 2017

*Whilst every effort will be made to adhere to this schedule unforeseen circumstances may delay or restrict publication or delivery and no responsibility can be accepted for late or non-appearance.*

## WHERE TO SEND YOUR ARTICLE

If you would like information on your group to be published in Beach News, or have some interesting news to share, write an article and send it along. Email it to **[beachnews@waterbeach.org](mailto:beachnews@waterbeach.org)** or send it to 5 Spurgeons Ave, Waterbeach, Cambridge CB25 9NU.

If you have posters detailing one off local events that you would like put up in the Associations notice boards at Waterbeach Green, old Post Office and School entrances on High Street and Way Lane, please post four copies to 5 Spurgeons Avenue, Waterbeach, Cambridge CB25 9NU (Maximum size poster A4 in portrait format)

*Front cover – Bottisham Lock, Waterbeach (Photograph by Richard Youell)*

## Contents

Community Association	1	Patient Participation Group	19
WASPS	3	Tithe Barn	20
Waterbeach Wives Group	4	Cambs Alliance for Independent Living	21
Waterbeach School	5	Community Playgroup	22
Toddler Playgroup	6	Waterbeach WI	23
Waterbeach Colts FC	7	Alzheimer's Society	23
Neighbourhood Plan	8	Beach Social Club	24
Waterbeach Community Players	9	Urban&Civic	25
Library News	10	Keep Waterbeach Rural	27
Waterbeach United Charities	11	Waterbeach United Charities	28
Waterbeach School PTA	12	Poems in the Kitchen	29
Fun Dog Show	13	Assistance from Waterbeach	29
News from Cllr Peter Johnson	14	Fen Edge Festival	30
Happy Folks Club	15	How safe is your home?	30
Foodbank	15	Fire and Rescue Service	31
Waterbeach Scout Group	16	Quit Smoking	31
Gardening Club	17	Waterbeach Surgery	31
Beach Bowls Club	18	What's On	32
CamLETS	18		

# Community Association



**Christmas** - As usual Waterbeach Community Association will be holding the annual 'Carols on the Green' on Christmas Eve at 6.30pm. The carol sheet will be available on the evening or you can download a copy in advance from [www.waterbeach.org](http://www.waterbeach.org). Please remember to bring your lights, torches, lanterns etc. as lighting is limited on the Green. This is always a popular and well supported event and a fantastic way to start your Christmas celebrations.

We would like to take this opportunity to thank Martin Ensell from the Baptist Chapel who will lead this year's 'Carols on the Green', and the bands of the Salvation Army and Waterbeach Brass for providing the music. We



also thank Bannolds who kindly donated the tree and Gary Langley and team



for doing their magic with the lights around the Green and having everything looking festive - many thanks to them all.

It was decided that this year's collections at the Feast and on Christmas Eve should be used to support Waterbeach Community Association and local groups and clubs. Community Association members will carry collection buckets during the carols, so please bring your loose change and give generously. There will also be a collection bucket near the bands on the Green.

Over the years we have been able to support many local groups and clubs including Waterbeach Day Centre for the Elderly, Waterbeach Salvation Army, Guides, Beach Churches Together, Waterbeach Toddler Playgroup, Waterbeach Community Playgroup, Rainbows, Waterbeach Brass, WASPS, Waterbeach Baptist Chapel, the WAY Project, Waterbeach Badminton Club, and the Waterbeach Military Heritage Museum. Applications for donations are welcomed from both existing and new groups in the community area, e.g. for a specific project or set up costs. All applications giving full details of exactly how the money would be used to be sent in writing to The WCA Chairperson, Jacqui Rabbett, 9 Providence Way, Waterbeach, Cambridge CB25 9QH.

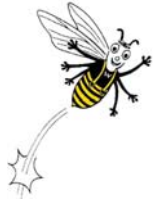
**Feast 2017** – To organise the Feast requires a solid team of dedicated people. Whatever your skill or available time there's something you can do. You don't have to be young and agile, there are many jobs that can be done from the comfort of your own home in the months leading up to the Feast – whether it's helping with bookings, sending out letters, researching possibilities for arena events or publicity. Help is also required on Feast day itself, especially manpower. A group of volunteers who are willing to work as a team are needed to set up for the event and clear away afterwards. Unfortunately, if there are no volunteers there will be no Feast! A meeting to discuss next year's Feast will be held on Monday 16<sup>th</sup> January 2017 at 7.00pm in the Community Room (Library), Waterbeach School. This meeting is open to anyone who feels they can assist in helping to organise Waterbeach Feast 2017. If you have any questions, please contact Jacqui Rabbett Tel: 01223 860993 or Email: [feast@waterbeach.org](mailto:feast@waterbeach.org)

**Beach News** - Thank you to everyone who has made our village publication so varied and interesting throughout the year. We really appreciate all your contributions. A special thank you also to our team of Beach News deliverers who volunteer to deliver the magazine throughout the area.

It just leaves me to say, on behalf of all the committee of Waterbeach Community Association, have a very Merry Christmas and a Happy New Year.



# WASPS



We've had a busy start to the autumn term and the children have settled in well during our sessions following the summer break.

We give a warm welcome to the new children and families who have joined



WASPS recently and hope they are enjoying their time in the club so far. We had an Autumn themed week before half term, the children came up with a long and imaginative list of activities for the week. The children got busy searching for leaves and twigs outside, making paper plate hedgehogs, leaf wreaths, lollipop stick scarecrows and weaving their own spider's webs. All of these projects contributed to a colourful autumn display at the playhouse.

We would like to thank all those who attended our AGM on Tuesday 27<sup>th</sup> September;

it was a good turnout. A new Management Committee was successfully elected. We thank the Committee Members who stepped down at the AGM for their help and support.

Holiday Club ran throughout the half term break, the children enjoyed a variety of fun activities, including soap carving, forest school, clay tiles, baking, spooky play and many Halloween themed activities. Planning is now underway for our Christmas/Winter Holiday Club.

**Christmas/Winter Holiday Club** sessions will run on Wednesday 21<sup>st</sup> and Thursday 22<sup>nd</sup> December 2016. Then Tuesday 3<sup>rd</sup> and Wednesday 4<sup>th</sup> January 2017.

**Holiday Club** is open to 4-11 year olds, 8 a.m. – 6 p.m. for a full day. We also offer flexible booking with half day sessions and bookings for a minimum of 2 hours. Half day sessions can also be extended on an hourly basis and a sibling discount is available. Snacks and drinks are provided throughout the day, but a packed lunch is required from home.

**Breakfast Club** runs from 7:45 a.m. – 8:50 a.m. and After School Club runs until 6 p.m. on all school days. Our term time clubs are currently quite busy with limited availability. Please inquire with a Co-ordinator to book a place.



We will be celebrating 20 years of WASPS next year and are starting to think about marking this occasion. If you/your family have had involvement with WASPS over the years and you would like to be involved in helping to plan a celebration, we would love to hear from you!

Contact us: For more information, please visit our website: [www.waterbeach-wasps.org.uk](http://www.waterbeach-wasps.org.uk) or telephone 01223 861140 during opening hours. Outside of opening times, please leave a message and a member of the team will return your call when convenient. If you would like to book a time to call in and meet the team prior to making a booking, let us know.

## Waterbeach Wives Group

We were just getting used to long Summer days sliding gently into still warm Autumn ones, when September brought us back to meet again (1<sup>st</sup> and 3<sup>rd</sup> Wednesdays 7.30pm in the Church Room) to be entertained by David, a retired sailor. He spoke of his time in the Royal Navy, in action in the Falklands conflict, and later as a crew member of the Royal Yacht Britannia. A fascinating memoir, some of his private photos of the Royal Family are amazing.

We would like to thank everyone who supported our Autumn Sale in the Church Room on 8<sup>th</sup> October, this was in aid of our charity, Riding for the Disabled, and raised over £700 - marvellous!

Also in October, Andrew from Scotsdales came for a return visit, accompanied by some of the beautifully coloured shrubs and plants now in their Autumn glory. He never fails to surprise us with his knowledge and experience of matters horticultural, delivered in his own inimitable style!

We have several "in house" meetings throughout the year: we talked our Maureen into teaching us how to make her lovely fabric flowers, which we sold at the Autumn Sale, and our founder member Brenda set us an unusual flower decoration competition to keep us on our toes! Both hugely enjoyable evenings.

November 16<sup>th</sup> brought us Louise and her silver clay jewellery, and December we look forward to our Christmas Dinner! Happy Christmas!

We go as a group to our excellent local Pantomime in January – Waterbeach Community Players – an evening of pure joy during what is so often a cold dull month!

For the future: March 1<sup>st</sup> Guinevere Glasfurd-Brown, our very own local author is coming to talk to us about the making of her best seller "The Words in My Hand". She will be bringing copies of her book to sell, so a chance to get a signed one.

New members/visitors always welcome. For further information please contact Sheila Gill 861999 our Chairperson.



# Waterbeach School



The start to the academic year always seems to come round quickly and the summer holidays just disappear. It is amazing to think that is December already. Bonfire night has gone and the school remembered our fallen soldiers, from the wars of the past, on November 11<sup>th</sup>. Our children have settled into school well and our new reception class children are enjoying their new school life. This year they have the use of some wonderful new furniture purchased for them by our supportive PTA group.

Our new staff, four in total, have settled into their roles.

The project for the Year One outdoor classroom still requires additional funding as the school budget is not sufficient to purchase everything that we would like to have. We have now however secured a grant and received funds from our ever generous PTA. Currently we await the outcome of the Bags of Help scheme being organised by Tesco. I am determined that we will secure the resources that we want for our children – even if it takes a little longer than usual. Please put your tokens into the box for us when you shop at the store in Milton. Every little helps – so they say!

Last year the school developed a new assessment system throughout the school as a result of government changes to the curriculum. The year 6 children completed new tests in the summer and performed well. 63% of our children achieved the required age related standard in reading, writing and maths. The national average was 53%. We were very proud of our children and staff for working so hard.

In February as many of you know we had a visit from the Ofsted Inspectors. The school was rated “good” a fact that we are all very pleased with. This is down to the hard work of all the staff, governors and children combined. The school does indeed work as a community.

We are very keen for volunteers to come into school to help with our work. Mrs Ogilvie is currently planning a new initiative for adults to work in school first thing in the morning, so if you are interested please get in touch. You will need to have DBS as part of our safeguarding checks.

I look forward to hearing from you and working with you all.

Jane Green - Headteacher

## ***Waterbeach School Choir Carol Singing***

***On Thursday 15<sup>th</sup> December, from 6pm, the Primary School Choir and their parents will be coming around the village carol singing.***

***We are raising money to buy musical instruments for the school and would be grateful for your support.***





# Toddler Playgroup



The Autumn term has seen us welcome a new set of children into our 'Advancing 4s' group here at the playgroup and they have all settled in really well and made new friends. Parents were able to accompany their children to sessions until they were settled.

This term, our curriculum has included letter sounds which we have been focussing on a different one each week, working our way through the alphabet. Other things we have been focussing on include number recognition, days of the week, months of the year and also shapes as the year progresses.

Later this term the children will be engaging in a number of activities and events in preparation for Christmas. This will include our annual Christmas Performance put on by our 'Rising 5s' which is always a huge success. As well as the end of term Christmas Party, which includes a special visitor.

The Playgroup Management Committee as always are busy fundraising and at the time of writing this article we are busy preparing for the Nearly New Sale and Cake Stall which is to be held at the Tillage Hall this year. Lots of preparation too for the Christmas Fair is underway. Also, the children helped with the fundraising efforts, providing their self-portraits of hand prints to help create Tea-Towels.

## ***Dates for the Diary:***

- *Friday 3<sup>rd</sup> February 7.30pm*, Race Night at the Beach Social Club, all welcome
- *Thursday 2<sup>nd</sup> March 7.30 - 11pm*, Our ever popular Auction of Promises will be held again at The White Horse Pub, Waterbeach.
- *Saturday 25<sup>th</sup> March 9 - 11am*, Mother's Day Cake stall
- *Saturday 13<sup>th</sup> May* The Running Festival was a huge success and this is now planned again for 2017, look out for future information.

Visit our website to see up and coming events.

All of the money raised by these events is used for projects and resources directly associated with the playgroup and enables us to enhance and expand the learning opportunities of all our children. Your support is greatly appreciated. If you wish to find out more about the playgroup then please check out our website or contact our Play Leader, Wayne Badcock via e-mail [waterbeachtoddlerplaygroup@outlook.com](mailto:waterbeachtoddlerplaygroup@outlook.com) or call him on 07808 357729. Alternatively, any of our committee members would be more than happy to talk to you.

# Waterbeach Colts FC



Welcome to Waterbeach Colts Football Club! We are an extremely accommodating, friendly and well organised club for players, coaches, managers and parents alike, with a keen interest on ensuring it is a safe and enjoyable club to be part of. We aim to ensure that there is a position at the club for all children regardless of ability, with an aim to help them on their footballing journey and allow them to express themselves with freedom and learn from some high quality coaching.

We have teams represented at most age groups, from Under 6s through to Under 16s, with two teams at U8 and U11 levels. We welcome and encourage girls and boys. If you are interested and would like to join or find out more, please contact Gary Fletcher, the WCFC Chairman, on 07789 747 347, or email [fletchergary@hotmail.co.uk](mailto:fletchergary@hotmail.co.uk)

We are affiliated to Cambridgeshire Football Association and, at present, league matches take place on Saturday mornings for Under 7s through to Under 14s, and on Sunday mornings for Under 15s and 16s. Teams train at Waterbeach Recreation Ground on Saturdays (and during evenings when they are light enough) from September through to May. We are fortunate to have facilities to train at the sports hall on the former barracks during the evenings from October to March, when the days are short and the evenings dark.

Thank you to the Parish Council and groundsman for keeping the recreation pitches marked out and in good condition, and to Urban & Civic for use of the sports hall on the former barracks site.

Our trained football Coaches are all volunteers who give up much of their spare time during the week and at weekends to help our young players develop their skills and confidence. The commitment of our Coaches is tremendous, especially as they volunteer at this level year after year.

We are also fortunate to have a number of companies and organisations that provide sponsorship to our teams, for which we are very grateful. The team strips and other equipment purchased through their generosity make a huge difference to the Club and help to give the players a sense of pride. If you are interested in sponsoring a team, we are always looking for new sponsors – please get in touch with Elly Ruston, on 07986 340 869, or email [elly@ruston.eu](mailto:elly@ruston.eu)

*Coming up in 2017 – 26, 27, 28 May* - our annual Football Tournament and Beer Festival is a community event for all – come along and cheer the teams on in the mornings, and/or relax at the Festival in the afternoons / evenings.



Starting on the Friday evening, a range of drinks available, a BBQ provided by the Scouts, music and dancing on the Saturday night, and live bands on the Sunday. More details to follow. If you are interested in offering sponsorship for the tournament/festival, or getting involved in other ways, please contact Elly Ruston, 07986 340 869 / [elly@ruston.eu](mailto:elly@ruston.eu)

# Neighbourhood Plan



The development of the Neighbourhood Plan continues to make good progress. The Neighbourhood Plan is about land use and how the Parish develops in the future. It will take into account what community is and its place as the village evolves. During October, we visited local businesses and community groups to enable us to understand what is felt to be good and not so good about living and working in the Parish of Waterbeach. We also held a workshop on 13<sup>th</sup> November with invited members from community and business. We had some great discussions and have gained some very useful information to help us to shape our plan. Thank you to all who completed the online "Survey Monkey". The results will be available soon. Consultation with our community is one of the key elements of the Plan. We have especially taken on board your comments regarding congestion in the village, current development and development of the barracks land and adjoining green field agricultural land (Policy SS/5 Waterbeach New Town in the Local Plan.) It has been made quite clear that our local shops and pubs need to be supported to keep them viable for the future. We have many community groups which cover all ages and interests in the village which run on a voluntary basis and need support. It is very important to safeguard our local green spaces and meeting places, our school, doctors' and child care provision to enable parents to work. Getting the right sort of housing mix to meet local need has been identified and the importance of cycle lanes and green corridors for connectivity.

We are very grateful that a member of our community has come forward to design the web-site for the group which is great so look out for us!!

We are now looking for an administrator. This is a very important role to keep us on track. It is a paid post if you would like further information please email: [council@waterbeach.org](mailto:council@waterbeach.org) or telephone 01223 441338.

The results of the photo competition will shortly be published on our Facebook page. Thank you to all participants and to Richard Youell our illustrious judge.

That's about it for now please do feel free to contact us anytime.

You can follow us on Facebook Waterbeach Neighbourhood Plan.

Sign up for our e newsletter at: [npadmin@waterbeach.org.uk](mailto:npadmin@waterbeach.org.uk)

# Waterbeach Community Players

## ***Farewell Steel Magnolias and Hello Sleeping Beauty!***

So, we have just finished our final night of Steel Magnolias and we in the cast and crew have been having fun at the last night party. It's always bittersweet when a production is over. Everyone works so hard trying to bring it together, the worry of whether it will ever be ready, the concern about whether we will sell any tickets and then the opening night arrives and it's just wonderful for those few days before it's all gone and it's on to the



next thing. Not sure it sounds so great as I am writing it, but let me assure you it really is, being part of WCP is just such a satisfying and lovely thing to do. So, to those of you who came and supported us in Steel Magnolias and lots of you did, in fact it was our biggest turnout from the village for a play yet, we would like to say thank you and sorry for the sad ending! Looking around at the audience each time I could see that many had a tear in their eye at the end. If you have seen the film you will know what I mean.

Anyway, our next production won't make you cry at all, well that is unless you are overwhelmed by Chris Shinn dressed as a very large dame trying to seduce the Court Jester! Our panto this year is Sleeping Beauty when the beautiful Princess Aurora has been cursed by the evil fairy Zelda Blackadder but luckily there are loads of good fairies around to save the day and put her into a long sleep to wait for the handsome Prince Valiant to rescue her. That and of course our traditional mime, kids bit, UV and the best chorus this side of the A14 (you have probably guessed I am in the chorus)!! Tickets are already selling well so particularly if you have young kids do get your tickets booked now so that they have a good view of everything. It is on at Waterbeach School 19 – 21 January at 7.30pm (Saturday matinee 2.30pm). Our Advance Box Office number is 01223 880023 or choose your own seats online at [www.wcp.ticketsource.co.uk](http://www.wcp.ticketsource.co.uk). You may also book in person via The Sun Inn, Waterbeach. And if you are tempted to maybe give us a try and come and be part of the group why not have a chat with Chris Shinn when you book your tickets on the number above and he can tell you all about it. Have a lovely Christmas and look forward to seeing you there.



# Library News



Waterbeach Independent Library continues to go from strength to strength, which amazes us all, but even though successful we continually try to improve in order to provide our Community with a Library service second to none.

This year the Summer Reading Challenge was well received by both children and parents - the theme being Roald Dahl books. We had 109 children receive their Certificate and Medals at school assembly on Friday 4<sup>th</sup> November when lots of very proud children took to the stage for a round of applause from their school colleagues. Children who participated from other schools in Cambridge received their certificates at their home addresses.

Our thanks to the Community school who work constantly to assist children to achieve high standards in reading. Also our thanks to you the Community who, via the Parish Council, help fund the Library through your Community tax.

It has been a difficult few months with us losing some of our Volunteers from the Monday morning team due to responsibilities of grandkids, and also elderly parents. We also have been experiencing low numbers of members using the Library on a Monday morning as there are many other groups meeting at that time. As a result we had to consider whether Monday mornings was an appropriate time to open, and after due consultation it was decided as from Monday 7<sup>th</sup> November the Monday morning session would cease to operate. The playgroup will continue to visit every three weeks, but the Library will not be open for the general public on a Monday morning. We are sorry about this decision, it was necessary, but apologise for any inconvenience caused.

We are however opening the Library on a Wednesday afternoon to replace the Monday morning session with two new Volunteers. This will operate from 2.45-5pm, commencing on Wednesday 4<sup>th</sup> January, 2017.

So the Library will be open on the following days-

Monday afternoon	2.45 -5pm
Wednesday afternoon.	2.45-5pm from 4 <sup>th</sup> January, 2017
Wednesday evening	6pm-8pm
Friday afternoon.	2pm-5.30pm
Saturday morning	10am-12noon

We continue to run a Babies and Bumps session, in conjunction with the Dolphin Centre, twice every term, the most recent group met on Wednesday 2<sup>nd</sup> November.

We have two young men carrying out voluntary work in the Library at the present time in order to gain their Duke of Edinburgh Bronze Award. Also

although young Ollie has achieved his Scouts Library badge he has returned to help in the Library on a Friday afternoon after school.

Within Waterbeach we are lucky to have our own Library - a Community Library, run by the Community, for the Community, funded by the Community. We will be carrying out a leaflet drop when the weather warms up a little to advise all those new folk moving into the village where we are, but in the meantime if you meet any of them please mention we have a Library in the village. You can order books from us, order online any books you require to be delivered to Waterbeach-saving you a trip into town, also drop books back to us to be returned to any Library in the county. We also have a computer for you to use as we are connected up to WiFi. We are a friendly Library - not a "shushy" Library as one very young man advised us - so pop along to peruse the books - or just drop in when it is cold outside. We love meeting our community so pop along to visit.

Waterbeach Library is located in the Community Room on the Waterbeach School site. If you already have a Cambridgeshire Libraries card this can be used at Waterbeach, or you can join the Library there to enjoy the benefits of all Cambridgeshire Libraries. Please see our Facebook page <https://www.facebook.com/WaterbeachLibrary> which provides information about various happenings.

**Mobile library visits** - The mobile library calls once a month, on the second Monday, so forthcoming dates are 12 December, 9 January and 13 February. Timings are: Waterbeach – Denson Close 13:30-14:00; Waterbeach – The Green 14:05-14:25; Waterbeach – Chapel Close 14:30-14:50; Waterbeach – Buchanan Centre 14:55-15:30; Landbeach – 9 High Street 15:40-16:20. For more information, see [www.cambridgeshire.gov.uk/library](http://www.cambridgeshire.gov.uk/library), or ask at any library.

## Waterbeach United Charities (Reg No 201528)

### **(Clause 4 (2) grant)**

Organisations are invited to apply for a grant from the above Charity subject to funds being available at the end of the financial year (December 2016).

Applications to be submitted in writing clearly stating the reasons for the grant and they should include details of any fund raising efforts that have been made. Closing date will be **31 December 2016**. These grants will be considered early in the New Year.

Not all applications may be successful and the Trustees' decision will be final. Please send details to:

Mrs S Wilkin, The Secretary, Waterbeach United Charities  
25 Payton Way, Waterbeach, Cambridge CB25 9NS



# Waterbeach School PTA



What a fabulous and busy beginning of the new school year it's been, with lots of events in such a short time. As always, we owe a huge 'Thank you' to all who were involved and turned these events into successful ones – school's staff, parent helpers, volunteers and supporters – we are so incredibly grateful for all you've done.

This year's AGM was a great success - we have some new committee members and we have a theme to our fundraising: **MUSICAL INSTRUMENTS!** The plan is to renew and replace the school's musical instruments, so watch out for a few musically-themed events throughout the year.

*Our committee for 2016-17:* Chair - Clare McDonald, Secretary - Laura Lehtosalo, Treasurer - Julia Garbutt

General Members: Fiona Coleman, Michelle Pauly, Sarah Jackson, Esra Haigh, Lisa Wakley-Davies, Di Hurst, Ofelia Stanciu

The autumn's term highlight was the Winter Fair, on Sunday 27<sup>th</sup> November (At the time of writing, the Fair was just a few weeks away and promising to be a big success...). We cannot thank enough all who volunteered to help with setting up and with the activities and of course our visitors. A special mention goes to the PTA's brilliant Michelle Pauly for leading the event. Her professional experience, energy and enthusiasm were key to providing a much-improved, revitalised and top-quality Winter Fair. Thanks Michelle!

It was the first time we organised a Pumpkin Sale and Cake Stall right before half term and the response was fantastic. We have also been able to provide Halloween Discos (special thanks to the brilliant Bob Benton and his team), the Christmas Cards Art project and welcome gifts for the new reception children.

## ***Dates For The Diary***

*Valentine's Cake Stall – 10<sup>th</sup> February, from 3pm*

We just can't say no to those delicious homemade cakes, can we? Come to the school playground and indulge yourself (and your loved ones) to some Valentine treats.

*Quiz Night – Friday 24<sup>th</sup> Feb, School Hall*

Our ever-popular quiz is back with PTA's own Fiona Coleman as quizmaster. Fiona made her premier appearance last year by putting on a fabulously fun quiz, including an ingenious paper aeroplane round – what can we expect this year?! To book your team's place look out for the posters or check the school website or Facebook page in January - not to be missed!

Are you an online shopper? Here's a really EASY way to help the PTA... With Christmas around the corner, you can raise money for the school without any

extra cost to you when you shop online via [easyfundraising.org.uk](https://new.easyfundraising.org.uk). To sign up go to <https://new.easyfundraising.org.uk/invite/MQYZIK/> and we get an extra £1 for every person that signs up and makes their first purchase.

We're always happy to hear from you. For any enquiries, please find us on Facebook (Waterbeach School PTA), email us on [waterbeachpta@gmail.com](mailto:waterbeachpta@gmail.com). or contact us via the school office.

# Fun Dog Show

The second Waterbeach Fun Dog Show was a resounding success, raising even more money than last year. The sun shone, big dogs, little dogs, big people and little people all made the event a truly fantastic day. There were no paw punch ups and almost every dog went home with a treat, a rosette or a prize. There are some very lucky much adored dogs in the village and beyond. This year we were donated a hoard of handsome trophies which were won by some equally handsome and brilliant dogs.



A little comment from a visitor to the village:

*"I brought my dog and grandchild and have never been to a dog show before. We had such a lovely time, little Patch did us proud, had a great time socialising with other dogs. What a well organised event and plenty of good ring side stalls and food."*

After costs, a whopping £1000 proceeds from the day were split equally between the village Happy Folks Club, Retired Greyhounds Trust and Poplar



Farm Kennels and the Waterbeach Wives supplied scrummy cakes raising a lot of money for Riding for the Disabled. We could never have pulled such

a successful show off if it was not for the kind generosity of lots of local businesses who generously supported the show.

Waterbeach Fun Dog Show will be back again next year, so keep your *Paws at the Ready* and an eye on the Facebook page for news!

*Jude, Wendy and Amanda (dog show crew!)*



# News from Cllr. Peter Johnson

I wish all the residents of Waterbeach, Landbeach, and Chittering a Merry Christmas and a Happy New Year.

This year has seen changes to our village, the most noticeable one being the fields along Bannold Road being built on and the ensuing chaos that came with it. There are other controversial planning applications in the pipeline and possibly more unwanted changes to our village scene. I will of course always fight for the village to get the best possible outcome.

**Back Stile Footpath** - Well this footpath did get cleared with the help of about 12 Amey work staff, but it did take several hours. They are now trying to get it put on the list of regular jobs that get done once a year which I think is admirable. Many complain about the odours that we get now and again but they have proved they are prepared to come and work in the community to help us and that says a lot. They always have a concern about the odour issue so if you notice a bad smell during working hours contact them on 01223 861010.

**Station Car Park** - The interest in converting the old goods yard has hit the buffers it seems, there are other ideas to extend the present car park. The County Council is investigating, but I fear that money will be the answer and there seems to be precious little of that about. Their main contractor has quoted a ridiculous price to create this extension and I have been asked to see if I can get a better price. I did notice the other day that even though there were 10 empty spaces, cars were still being left on the verge.....

**Primrose Lane** - Yes the Lane was trimmed in September and I have asked that there is a maintenance programme put in place so that we do not get into this situation again as it is so unnecessary.

**Speedwatch** - My kit has had to go back to for insurance purposes, it was only recalibrated in the late summer but it appears that this happens quite regular. I am not sure how long this will take but after Christmas I will arrange some sessions. Landbeach residents have shown concern about speeding in the village so if anyone wants to volunteer to come on the team I am authorised by the Police to do training. I do have to get the Police to identify areas where we can do this. This is something they have to do and then each area is given a code as all reports are done electronically and it speeds things up.

**Bannold Road** - I am having regular meetings with South Cambs Planning department so that problems we have had will not reoccur. These meetings will involve the Waterbeach Drainage Board Engineer as well as management from the various companies who are involved the building projects in Waterbeach. It is a privilege to represent the residents of Waterbeach, Landbeach, and Chittering, and I will always do my best for you all, if you have any issues or concerns that you think I should know about please contact me by whatever method you prefer, phone, e-mail or knock on the door.

Tel: 01223 560918 or 07947 475549

Email: [cllr.johnson@scambs.gov.uk](mailto:cllr.johnson@scambs.gov.uk)

# Happy Folks Club

The nights are drawing in, the days grow shorter, we at the Happy Folks Club are busy having fun!! The club members have been to Kings Lynn and Norwich for some retail therapy and are due to visit Wicksteed Park for their Christmas show and lunch. Before that however we go to Peterborough greyhounds during the first week of their turkey and tinsel evenings. We have also just had a fish and chip lunch in the Beach Club, although the food was a little late coming, it was magic. Thank you, Marion!

This was all due to the donation from Wendy Johnson and the Fun Dog Show, thank you very much Wendy. Look forward to seeing you at next year's show.

The club continues to grow, we currently have 58 members, we must be doing something right!

Our Christmas party will be on 16<sup>th</sup> December, then in the new year we are off to the Five Miles From Anywhere for our Christmas dinner.

We wish you all a very Merry Christmas and a Happy New Year.

# Foodbank



## ***What's for dinner?***

No Food and no money to buy any? The Foodbank can help.

- Personal Crisis
- Sudden Job Loss
- Illness
- Separation
- Homelessness

The Foodbank can give emergency supplies if you have a voucher. The Waterbeach Distribution Centre is open in the Baptist Chapel every Thursday morning between 10.30 and 12.30, and there are other locations around Cambridge you can use too.

Contact your local support agency such as: Waterbeach Children's Centre, Waterbeach Baptist Church, Citizen's Advice Bureau (CAB), Centra Support, your health visitor, your caseworker, housing association, Wintercomfort, or one of the areas other voluntary sector workers to discuss your situation.

Sorry but we are not allowed to give out food unless you have a voucher.

If you are a local organisation who would like to become a voucher holder and refer those in need please contact [agency.manager@ccfb.org.uk](mailto:agency.manager@ccfb.org.uk) .



# Waterbeach Scout Group



Waterbeach Cub Scouts have had a busy time recently. Here are some reports from some of our members.

"Cubs went on summer camp to Belchamps camp site near Southend. We got to go there in a cool big van with our friends. The tents were awesome. There was plenty of time to explore and have fun. Lovely food and treasure hunt to win loads of sweets. We went to the beach on Monday to play and have a picnic as part of our 100 years of Cubs. We collected stones and pebbles to make animals with wiggly eyes. It was good fun. Too soon time to come home."

*By James, Evan, Ryan and Nicholas*



"As part of 100 year celebrations we went to Whipsnade Zoo. It was a very big park full of animals. We all got goodie bags before setting off to explore. First the butterflies were so big and lots of colours. We saw loads of cool animals elephants, bears, cheetahs, hippopotamus, red panda and more. We watched a sea lion show.

A few of us brought limited edition lion cubs with the 100 Anniversary logo on them. It was an awesome day."

*By Zachary, Edward, Harrison and Harry*

**Bingo** - Our Prize Bingo season is well underway. It's a fun family evening out. The games begin at 7-30pm. We have 3 games then a refreshment break and raffle, followed by another 2 games and flyer and we normally finish about 9pm. Our next Bingo will be the Christmas session on Friday 9<sup>th</sup> December. New Year dates are as follows; Friday 13<sup>th</sup> January & Friday 10<sup>th</sup> February 2017.

**Jumble Sale** - If you are having a clear out over Christmas, please think of us. We will be having our annual Jumble Sale at the Scout Hut on Saturday 28<sup>th</sup> January 2017, 10am till 1pm. We will also be selling bacon rolls if you fancy a snack while having a rummage.

**Santa's coming to your street!** - Santa and his sleigh are coming to Waterbeach on 5<sup>th</sup>, 6<sup>th</sup>, 12<sup>th</sup> & 13<sup>th</sup> December. He will be visiting with his helpers between 6pm and 8pm each day and a licensed door to door

collection will be made in aid of The Friends of Princess of Wales Hospital, Ely and the Scout and Guide Hut repair fund. Routes are as follows;

**Monday 5<sup>th</sup> December:** Denny End Road, Waterbeach Court, Winfold Road, Clare Close, Providence Way, Bannold Road, Bannold Court, Levitt Lane, Cheason Walk, Shipps Field, Heron Walk and Pritchard Walk.

**Tuesday 6<sup>th</sup> December:** Wheatsheaf Way, Cody Road, Capper Road, Fletcher Avenue, Capper Road, Abbey Place, Bannold Road, Park Crescent, Josiah Court, Way Lane, Fenleigh Close, Spurgeons Avenue and Way Lane.

**Monday 12<sup>th</sup> December:** Waddelow Road, Denson Close, Primrose Lane, Rookery Close, Jubilee Close, Wiles Close, High Street, Vicarage Close, Greenside, Gibson Close, Chapel Street (from Village Stores to Cambridge Road), Coronation Close, Glebe Road, Mill Road, Harding Close, Saxon Way, Poorsfield Road and Cambridge Road.

**Tuesday 13<sup>th</sup> December:** Cattells Lane, Pieces Lane, Hartley Close, Saberton Close, Pieces Terrace, Woodpecker Way, Burgess Road, Rosemary Road, Payton Way, Rosemary Road, St. Andrew's Hill, Station Road, Lode Avenue, Adams Court, Whitmore Way, St. John's Close, Chapel Close, Chapel Street, Greenside, Wellington Close, Barker Close and Orchard Drive.

## Gardening Club



At the start of September we enjoyed a successful and well attended Annual Show. For the first time this was a joint venture with the WI and we hope that this cooperation will continue in 2017. The programme of talks resumed after our summer break with a practical demonstration by Andy Riley from Oakington Garden Centre entitled 'Ideas for Autumn and Spring Colour'. We look forward to seeing the colourful results of his suggestions around the village in the coming months! The AGM was held in October with some new members elected to the committee, followed by an illustrated history of royal gardens. Retiring committee members Ann Brown and Joy Morter were thanked for their efforts on behalf of the club over many years. November saw a return visit by Richard Ayres. As former head gardener at Anglesey Abbey he was well-qualified to speak on 'Snowdrops and Winter Interest'.

We focus on social events in January with the ever-popular New Year meal and quiz before the talks resume in February with a visit from local gardener Joe McWilliams who will be speaking on the topic of 'Fungus: Friend or Foe?'. New members are always welcome and visitors may attend individual talks for £3 on the door. We meet on the third Thursday of each month at 7.45pm in the Church Rooms.

# Beach Bowls Club

When the last article about the Beach Bowls Club was published we were still enjoying the warm late summer weather. Following our success in winning Division 2 of the Cambridge and District Bowls league we took part in the Champion of Champions competition. Our first game was played at Trumpington in mid-September against Eternit who had been top of Division 5. The match was extremely close, but Beach won by a small number of shots. The next week the action took place at Sawston where we met Isleham who had topped Division 3 in the final. We had two excellent results against them last year, but we were well aware of the competition and anticipated a hard fought game. This proved to be the case and it was only when the last two rinks were finishing the final end that we knew for certain we had won. This is particularly rewarding as we had fallen at this last hurdle last year against Histon. After the final we checked the records and found out that it is more than 30 years since Beach last won the Champion of Champions. We look forward to attending the Dinner at the beginning of 2017 when we shall collect our trophies.

On a more mundane note a good number of the members helped the groundsmen to carry out the necessary tasks to close the green down for the winter and improve it for use next year. This shows the spirit that the club is enjoying. They can look forward to attending the dinner we intend to arrange in February or March.

We still welcome any new players whether they have played previously or not. An Open Day will be held at the beginning of next season when newcomers will be welcome. So do give Terry Pauley on 01223 860600 or Chris Rushmer on 01223 861354 a call.

# CamLETS

## ***Have you heard about CamLETS?***

Cambridge (UK) has had a thriving LETS since 1993. CamLETS enables members to exchange skills by means of a sophisticated barter system. You get things done for yourself by doing things for other people. We welcome members from all over the Cambridgeshire area and all kinds of skills are both valued and needed. Trading events that are open to prospective members are normally held the first Sunday of each month. LETS stands for **Local Exchange Trading System**. It is a way a community can trade skills, services or goods without needing or using real money. It's a bit like a barter system, but you don't have to do a direct swap - instead you use a local Complementary Currency. We trade using a currency called CAMS.



We are an established and successful community, and we welcome new members.

*"I have been a member for 22 years and much appreciate the fellowship of the group. Here are some of the ways I have benefited: bead stringing, cranial therapy, lesson in croissant making, computer help, darning, gardening, gooseberries, Italian tuition, lifts by car, window cleaning and wood chopping"*

Have a look at the website to get a feel for how it works - you can see the kinds of things on offer or wanted - and take note of the date of the next social and trading event. <http://www.cam.letslink.org/members/pages.php?id=59>

These questions will help you think about what you can offer and what you may want from LETS. Both are equally important.

1. Think of 10 things that you love doing, e.g. painting, tuition, organising things, cooking, writing, growing plants etc.
2. Think of 10 things that you hate doing (there may be people on LETS who love doing what you hate), e.g. cleaning windows, shopping, cleaning, gardening, cooking etc.
3. Think of 10 items you have, which you could SHARE with others, e.g. your lawn mower, internet access, fax, tools, spare room, camping equipment, guide books etc.
4. Think of any items which you might wish to sell on LETS, e.g. garden produce, crafts, unwanted clothes, shoes, books, toys, equipment, bric-a-brac, furniture etc.
5. Now think of 20 things you would WANT on LETS

## Patient Participation Group

Our Patient Participation Group (PPG) liaises with our GP's to act as a sounding board and critical friend. There is a core group of about 12 patients who meet quarterly with the Practice Manager. We discuss current ideas and concerns and support our Practice in any way we can. We also plan educational open evenings. The most recent one in October began with a talk on 'Anxiety and Depression' by psychotherapist Dr Pat Tate and proved to be very helpful and informative. More than 20 people attended that meeting which was hosted by the Beach Club. Look out for details of future meetings – we use the Parish noticeboards, Waterbeach Babble and other meeting places to advertise our events.

It would be very helpful to use emails and form a virtual group. We could inform people of meetings and perhaps survey patients' opinions when needed. If you are happy to be a virtual member please email me on [vivcooper@talk21.com](mailto:vivcooper@talk21.com)

# Tithe Barn

## ***Future hopes for Tithe Barn***

The Tithe Barn Trust was delighted to welcome Preschoolers from Beach Babies, Children's Nursery, on Monday 31<sup>st</sup> October, to the Tithe Barn in Landbeach.

Gemma O'Shea, Tithe Barn Trust Trustee, says "This is what the Tithe Barn Trust is all about, as public access and education are key to our aims. We hope that education visits will play a big part in the future of the Tithe Barn once restored. It was inspiring to see the Tithe Barn being used and for local children to begin making an emotional connection with their heritage".

The Preschoolers walked from their nursery through the village to the Tithe barn, arriving at 10am. They then listened to a story about Leonard the spider who lives at the barn and all that he has seen through history. The children explored ideas of what food plants were stored in the Tithe Barn 'in the olden days', with one Preschooler finally looking around spotting



some wheat and guessing "Weetabix plants". They also thought about what the barn could be used for and their suggestions ranged from building cars inside to dancing. Finally it was snack time and the concept of Tithes was cleverly introduced by Nicola Wallis, Beach Babies Preschool Teacher, when the children had to give a little of their breadstick to their accompanying grown-ups.

Nicola Wallis, Beach Babies Preschool Teacher, says "This is a really timely opportunity for the children to visit the Tithe Barn, as Beach Babies is participating in the BRIC project 'Young Children, Public Spaces and Democracy' led by Professor Tim Waller at Anglia Ruskin University. There is a need for sustained and frequent engagement in public spaces and the Tithe Barn can offer this."

The Tithe Barn Trust is a small charity aiming to save and sympathetically restore the 16th Century Grade II listed Tithe Barn for community use.

Whilst we have raised over £64k, our major fundraising quest continues to raise funds to fully restore this unique building. Our campaign is gathering momentum as we recently met with a potential grant provider and are now preparing a bid application for £400k.

We've been working hard; however, we still need your help to save this gem at the heart of Landbeach. We believe the Tudor Tithe barn, with thatched roof and historic brick and timber floor, to be unique to Cambridgeshire and even of national significance. Over 90% of Tithe Barns have been developed in the UK.

3 Ways YOU can get involved;

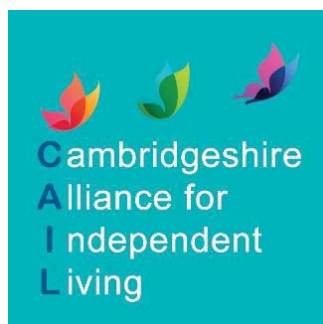
1. Make a pledge today at [www.tithebarntrust.org.uk/make-a-pledge/](http://www.tithebarntrust.org.uk/make-a-pledge/)
2. Become a Friend. Visit [www.tithebarntrust.org.uk/become-a-member/](http://www.tithebarntrust.org.uk/become-a-member/)
3. Volunteer or become a trustee. Email [tithebarntrust@gmail.com](mailto:tithebarntrust@gmail.com) to find out more.

Find us at [www.tithebarntrust.org.uk](http://www.tithebarntrust.org.uk), like us on [facebook.com/FriendsofLandbeachTitheBarn](https://facebook.com/FriendsofLandbeachTitheBarn) and follow us on Twitter @TBarnT

*How to find the Tithe Barn* - Kissing gate entrance is opposite No 2 Waterbeach Road, Landbeach, Cambridge, CB25 9FA. Walk along the grassed track along the hedge.

## Cambs Alliance for Independent Living

***Do you want to have a say in improving services from Health or Social Care?***



Cambridgeshire Alliance for Independent Living is a local independent charity that works to improve services by raising the voice of people living with all disabilities.

One of the ways we do this is by bringing people with all disabilities and carers (called Independent Members), Health and Social Care teams, and voluntary sector organisations (such as Age UK, Voice Ability, Cam Sight

and the Carer's Trust) together at 'Partnership Board' meetings.

The Partnership Boards are opportunities for you to have your say about what is good about Health and Social Care services, such as home care and day centres, and what you would like to improve or where you would like to see changes. Recent activities by the Partnership Boards include raising concerns about Home Care, which are now being examined closely by the County Council, involvement in helping to develop a new Carers Strategy and involvement in the process for choosing organisations to run Carers Services.

Interested in getting involved? We are looking for new Independent Members to join our boards. We offer full training and support, out of pocket expenses and reimbursement of travel. If you think this could be you, please contact Leisha O'Brien, Development Officer at Cambridgeshire Alliance for Independent Living by phoning 0300 111 2301 or email [leisha@cambridgeshirealliance.org.uk](mailto:leisha@cambridgeshirealliance.org.uk) To find out more, take a look at Partnership Board pages on our website [www.cambridgeshirealliance.org.uk](http://www.cambridgeshirealliance.org.uk)



# Community Playgroup



The start of a new year is always an exciting time for us. Welcoming new children and families who are starting a new year with us. It is always lovely to see last year's leavers starting at the Primary school all looking very smart and grown up in their school uniforms as they walk past the Playhouse on their way to school.

The Autumn Term is the time for settling in, either getting used to Playgroup routines for the first time or settling back in after a long summer break. Our staff have many years' experience in helping children to adjust: establishing routines and building confidence is a big part of coming to pre-school.

To support this big transition, our first book of the moment this term was Martin Waddell's "Owl Babies". This is a delightful story about 3 little owls who worry that their mother won't come home and are overjoyed and reassured when she flies back to them with their dinner. It is a story that the children

who are settling in to playgroup either for the first time or after the summer break can relate to as they get used to parents dropping them off and coming back at home time. It has also inspired some fantastic, feathery art work and is a great starting point for thinking about and enjoying the changing seasons.

Our Forest School sessions began just after half term, with the children wrapping up warm to head out into the frosty mornings and explore the woodland and bringing their autumn finds back to the Playhouse. We have also been visiting the Library on Mondays and enjoying getting stuck into our messy Wednesday activities – baking cup cakes in the warmth, making fabulous



splashy firework paintings and pouring, squishing and scrunching pasta, pulses and cornflakes. The children have plenty of their own ideas for exciting, hands-on messiness – so look out for jelly, spaghetti worms and plenty of glittery, slithery, slimy gloopy stuff in the coming weeks!

We are holding a Children's Christmas Craft morning on Saturday 2<sup>nd</sup> December and we would love to see you there, please call 01223 440769 for details.

We are open from 9am to 3pm daily during term time. We take children from their 2<sup>nd</sup> birthday. 15 hours government funding is available to all 3 and 4 year olds and to qualifying 2 year olds. We are situated in the primary school

grounds in the centre of Waterbeach. Supporting our play-based learning, we offer weekly Forest School sessions, regular visits to Waterbeach Library and the school gym and optional French lessons. Please look at our website and blog at [www.waterbeachplaygroup.org.uk](http://www.waterbeachplaygroup.org.uk) to find out more.

We currently have a few spaces for Spring Term, but places are going quickly. If you would like to come and see what we do, please call Jacqui Woods on 01223 440769 (term time) or email us at [info@waterbeachplaygroup.org.uk](mailto:info@waterbeachplaygroup.org.uk) for a Prospectus and application form.

## Waterbeach WI



We have had a run of very amusing and interesting talks ranging from belly dancing and pilates to a personal account of the life of a home economist. We now have over 35 members including many young women with families and all generations are well-represented, with some in their 80's. You would be very welcome to join us every second Thursday of the month in St John's Church Room at 7.30pm.

We have our Christmas Party with an a capella singing group for entertainment, festive food and quizzes. January will see Geoff Lambert explaining how dogs are trained to smell and warn of long term human conditions. Our AGM will follow in February. In addition to the monthly meetings we have a knit and natter group and a book group and we are able to benefit from the trips, talks, craft days and courses offered by CFWI.

## Alzheimer's Society



Here at Alzheimer's Society, we want to connect to as many people as possible who are affected by dementia. In rural areas, this can often be hard to get our message out there which is, "we are here for you".

As a result of the difficulties faced from rural areas, we are currently looking for volunteers to help raise awareness of Dementia and Alzheimer's Society in their local areas. This can be achieved by ensuring local GP's, health centres, community centres and even local shops have up to date information from us. The role would involve supplying these places with the information through the forms of posters etc. that would be supplied to you by our Information Worker. The Information Worker will be managing you to ensure you have the resources available to raise awareness of Dementia and Alzheimer's Society.

If the opportunity is of interest to yourself and you would like to speak about it in more detail, then please do feel free to email [Joshua.Pearce@alzheimers.org.uk](mailto:Joshua.Pearce@alzheimers.org.uk)

# Beach Social Club

Since the last Beach News, we have had a busy time. Apart from a mix of bands; solo artists and a comedienne, we enjoyed a fabulous Halloween disco for the kids and later the adults. All of the kids were in costume and looked super, many of the adults were also in great costumes and everyone thoroughly enjoyed themselves. In addition to that we have Country Music nights on certain Fridays organised by Steve and Pam Gothard.

The Harvest Festival auction raised £580 and a further £250 was raised through a charity football match and BBQ. We had a stall on Feast day which raised £380. Other funds were raised through raffles and donations from families who used the club for funeral wakes; Bingo and Quiz winners. Thank you to all who gave their time to run the stall and to all supported us throughout the year. In October, we presented £1369 to both East Anglian Air Ambulance & Diabetes UK.

The new charities for 2017, voted for by the members are Motor Neurone Disease and Beach SC.

## *Future entertainment:*

*Dec 17<sup>th</sup>* 'Jinx Brothers' Classic 60's-80's covers.

Plus our Christmas Draw

*Dec 18<sup>th</sup>* Members children's Christmas party with Disco Dave

*Dec 24<sup>th</sup>* Christmas Eve Disco. After 'Carols on the Green' come along and bring the kids until 9-00pm and then adults only. Free entry

*Dec 31<sup>st</sup>* New Year's Eve, with a buffet and music from 'The Spree'

Entrance is by ticket only, from 8.00pm. Members £10 and guests £12

*Jan 14<sup>th</sup>* Over 60's Party. Tickets only, collect from Club when advertised inside

*Feb 11<sup>th</sup>* Valentines. 'Round and Round' Trio playing 50's to present day music

*Mar 18<sup>th</sup>* 'Mean Eyed Cats' Rock 'n' Roll power duo

All functions are advertised in the club, in the outside display case and on windows, as well as around the village. Or call us on 01223 860033 for details.

The club function room is available for hire for parties/meeting etc., at very reasonable rates. We may also be able to accommodate local groups and organisations on a regular basis, daytime or evenings. Contact me or Secretary, Carol Monteith at the Club for information. Or call into the club. Bingo, sessions continue to be popular every Monday evening from 7-9 with cash prizes and a Jackpot Flyer. Everyone is welcome to join us for these sessions provided they are 18+.

New members are always welcome. Call in to collect an application form and have a look at our facilities. Then you can enjoy the lowest cost drinks in the area (probably). Finally, we wish everyone a very happy Christmas and New Year.

*Geoff Donovan. Chairman*



# Urban&Civic

It has been a busy few months on the Barracks, focussed around the consultation events held in September and October. These events set out the vision for the Barracks and Airfield site which has been developed through the previous open days and community workshops, and the extensive surveys, research and discussions undertaken.



Over 500 people came along to the 3 day event, which provided opportunities for bus and bike tours of the site, as well as over 250 metres of display boards to show the developing plans and some visual impressions of how the development will look. The Design and Development Team were on hand to answer questions and guide people through the material shown.

The displays set out key elements of the future development including:

- protecting and enhancing the rich landscape setting, including lakes and woodland;
- celebrating the heritage connections from Roman Car Dyke, along the medieval causeway to Denny Abbey, through to the military legacy of the RAF and Royal Engineers;
- the plans for up to 6,500 homes and the essential new schools, health centre and community facilities to support them;
- Extensive investment in public transport infrastructure, and future plans for the A10;
- Recreation and sports facilities, including over 260 acres of green space;
- Opportunities for skills and jobs within the development.

The majority of the feedback was positive, with lots of questions and concerns raised about ensuring that the investment in transport and community infrastructure comes in at the right time as the new community grows, and ensuring that homes coming forward are affordable to local people. There was also useful feedback on the level of integration people wanted to see with the existing village: with a majority view that people wanted to ensure the nature of the existing village was protected, and road links avoided to reduce rat-running, but at the same time to ensure that the historically strong links with the Barracks were maintained and new facilities easy to access. A more detailed breakdown of the feedback will be published in our next newsletter.

For those who missed the events, you can still see the displays online at [www.waterbeachbarracksconsultation.co.uk](http://www.waterbeachbarracksconsultation.co.uk), or if you want to go through them with one of the team, you can also arrange an appointment to view them on site. Feedback is now being reviewed and drawn into the final Outline Planning Application, which will be submitted over the Winter.

The team have also been working on the extension to the Village Cemetery, with a planning application in which will see an acre of the Barracks handed over to the Village to enable the much needed provision of additional grave spaces. We have also been working on the plans which will see 2 of the Barracks Blocks refurbished to provide accommodation for nurses as part of the move of Papworth hospital to the Cambridge Biomedical Campus. If you want additional information about these plans, please do not hesitate to contact us.

Meanwhile the facilities on site continue to be well used, with an estimated 150 to 200 people using the site every week for regular sports and leisure activities, along with the regular exercises run by Cambridgeshire Cadets. If you want information about how to book the Sports Hall, community rooms or squash courts please see

<http://www.waterbeachbarracks.co.uk/community-facilities/> or contact me on the details below:

Rebecca Britton - Email: [rbritton@urbanandcivic.com](mailto:rbritton@urbanandcivic.com) Tel: 07739 339 889



## Waterbeach Community Association Carols on Waterbeach Green



**Christmas Eve  
6.30pm**

**Please remember to bring your  
lights, lanterns and torches**



A copy of the carol sheet can be downloaded in advance from [www.waterbeach.org](http://www.waterbeach.org)

# Keep Waterbeach Rural



It has certainly been another busy year for the village due to speculative planning applications by developers. The Morris Homes development to the east of Cody Road of 60 dwellings has caused huge disruption for residents living near the site. Morris Homes have not met some of the planning conditions imposed. To the east of Cody Road Matthew Homes development of 36 dwellings has recently been refused for various reasons and is still ongoing. Persimmon Homes are

playing all sorts of games to gain permission to build 144 dwellings on land adjoining Matthew Homes. This is now at Appeal which will be held at Cambourne on Tuesday 29<sup>th</sup> November. Some residents will be attending and hoping to speak.

The Bovis Homes development of 57 dwellings in Bannold Road/Bannold Drove area and adjoining the proposed Persimmon development has started. Planning conditions, one of which is drainage have not been agreed between Bovis and SCDC. We all know the surface water flooding issues in this area. Bovis have also removed mature oak trees that they do not have permission for.

With both the Morris Homes and Bovis developments there has been and is a clear disregard and respect for residents who have had to endure endless weeks of traffic disruption and other nuisance.

The Appeal was upheld in favour of the developers to build 30 affordable homes on green belt land between the Industrial Estate on Pembroke Avenue and to the rear of Clare Close. This has caused grave concern to residents and business.

An application for 20 flats and a shop in Capper Road, 18 dwellings to the rear of Gibson Close and the conversion of the old Post Office premises to change from retail to residential use were all recommended for refusal by the parish council. Awaiting outcomes from developers and SCDC.

Urban & Civic held an exhibition at the end of September to showcase their proposal to build 500 -700 dwellings around the lake on the barracks on an unspoilt area of woodland. The proposed access from the site is onto the existing roundabout on the A10. When it comes down to the nitty gritty of infrastructure there were no evidence based solutions. These solutions need to be in place before any planning permission is granted to protect our village and community. U & C have also struck a deal with the Papworth Trust to convert buildings on the barracks to house 285 doctors and nurses (single occupancy we are told) when the hospital moves to the Addenbrooke's site. There were some pretty wacky figures being thrown around including the proposed travel plans. There is only provision for 94 car parking spaces and



it was unknown what developer contributions would be made towards the village. Questions were asked if there were any future plans to convert other buildings for local people to live. That was unknown.

Developers are expected to contribute in monetary terms to the local amenities and essential services. In reality the developers appear to be agreeing to contribute just enough to get permission to build approved. It is time that South Cambridgeshire District Council consult with the Parish Council before negotiating with developers.

The Local Plan saga continues. The Waterbeach Hearing will probably take place in March/April 2017. There are major challenges for the village being proposed by SCDC to make the plan sound. For details follow the link and scroll down for further information [www.scambs.gov.uk/content/councillors-agree-release-land-help-biomedical-campus-expand](http://www.scambs.gov.uk/content/councillors-agree-release-land-help-biomedical-campus-expand)

It appears that it is all gloom and doom but it's not. There is much good to fight for and protect. The developing Neighbourhood Plan is working to do just that. By community, for community. Please lend your support.

Follow Keep Waterbeach Rural on Facebook

JaneWilliams

## Waterbeach United Charities (Reg No 201528)

Waterbeach United Charities provide financial support or pays for services that help to alleviate individuals who are "in need or distress" who are residents of Waterbeach Parish.

**Electric Wheelchairs** - We have a number of electric wheelchairs for those in need. If you would like to be considered please let us know.

**Distress Grants** - The Trustees would like to hear from individuals who may be IN NEED OR DISTRESS. If you think we could help, and to find out whether you are eligible for assistance, whether it be loaning equipment to you, or providing financial support, please contact:

All personal applications are confidential.

Mrs S Wilkin, The Secretary, Waterbeach United Charities  
25 Payton Way, Waterbeach, Cambridge CB25 9NS

### **Thank You**

*I am hoping that through the Beach News you would allow me to thank the very kind people who came to my assistance when I caught my foot on uneven pavement, and fell in Way Lane on Saturday, 22 October.*

*I am afraid I didn't catch any of the names of those people. Firstly I think there were three young men and a young woman, driving a dark coloured car. They stopped and came over to help. Then a single man appeared and called an ambulance for my injuries. Lastly, my thanks also goes to the Lumley family who took me to their home, and looked after me until the ambulance arrived.*

*Thank you all for your kindness once again, Pauline Creek*

# Poems in the Kitchen

Our next 'Poems in the Kitchen' runs on a Saturday, January 21<sup>st</sup> : if work, school or college make Thursdays difficult, here's a drop-in which you might be able to manage, whatever the winter weather! Bring favourite or interesting published poems on the theme 'New Views' – or bring something relevant which you have written yourself. Wide interpretation of the theme is always fine: creativity of thought can be as enjoyable as creativity in writing! The drop-in runs from 10am to 7pm. Coffee, tea and soup lunch are available as part of the hospitality: all we ask is general friendliness and acceptance to all, and maybe a donation to the humanitarian aid medical charity, Médecins Sans Frontières, for their work in the Middle East with refugees from Syria.

'Poems in the Kitchen' is an informal offshoot of a community and churches group, Living With Integrity group <http://stjohns-waterbeach.org.uk/living-with-integrity/> which explores Sustainability, Ethical Living and Social Action issues. We appreciate their support.

Our October meeting, on National Poetry Day, enabled friends from aged 5 years to 80+ to share fun and wisdom around the theme of 'Messages' – and raise £176 for MSF.

Find Roseyard Cottage in the eastern end of Primrose Lane, walking up from the Green via the turning by Phillip Bull, Butchers. Parking is only for those who need disabled access. There are two steps. Ring 01223 860214 or email via [www.tourcambridge.co.uk](http://www.tourcambridge.co.uk)

## Assistance from Waterbeach

Waterbeach has joined with other Fen-Edge villages and voluntary organisations in Cambridge and beyond to provide life-saving equipment for refugees. Sleeping-bags, blankets and specific foodstuffs (especially sardines!) dropped off at the parish church of St John the Evangelist were transported to Cottenham ready for sorting and loading by the Cambridge Calais Refugee Action. Partners in the project have been the action group HOPEnothate, known for their commitment to inclusivity. Thank you to all concerned.

A.B. for Living With Integrity group

<http://stjohns-waterbeach.org.uk/living-with-integrity/>

<https://cambridgecalaisrefugeeaction.org.uk/>

<http://www.hopenothate.org.uk/who-we-are/organisation/>

<http://www.revcoffee.net/> ; <https://en-gb.facebook.com/CottenhamCares/> ;

<http://www.allsaintscottenham.org.uk/>

# Fen Edge Festival



The Fen Edge Festival is back. It's fun-filled, it's exciting, it's exhausting, and it's a highlight in the summer calendar. The Fen Edge Festival will be held between Friday 23 June and Sunday 25 June 2017.

The Festival is organised by the Fen Edge Community Association. As in previous years, the seventh Festival will be centred around Cottenham Village Green but will also encompass other locations in the village. Whilst many of the events and activities at the Festival will be free for everyone to enjoy, all profits are distributed to local charities and groups for the benefit of many.

Packed with a huge range of exciting activities, displays, stalls, food, drink and fabulous live



music - the Fen Edge Festival 2017 will be an unmissable event providing enjoyment for everyone who attends, takes part or volunteers.

The Festival is a fantastic opportunity to reach thousands of people, so if you would like to attend as a stallholder please email: [stalls@fenedgefestival.co.uk](mailto:stalls@fenedgefestival.co.uk)

Similarly, we are looking for local groups and organisations who would like to provide activities at the Festival. We can offer you a great opportunity to raise the profile of your group through your participation, so please email: [activities@fenedgefestival.co.uk](mailto:activities@fenedgefestival.co.uk)

So, put the dates in your diary now and make sure you join us for three days of good old-fashioned community fun next summer.

## How safe is your home?

Chief Inspector James Sutherland from Cambridgeshire Police created a quiz around a year ago, which is still running. Once the quiz is completed it tells you how safe your home is.

The "bad-wolf test" is an online quiz that takes just 2 minutes and tells you how safe your home is from burglars. You get a score of brick, twigs or straw.

Anyone who gets the straw rating is given an email contact address and encouraged to get in contact with Cambs Police so that they can come out and do a free full home security survey.

Try the quiz yourself to see how safe your home is.  
<http://tinyurl.com/bad-wolf-test>



# Fire and Rescue Service



It is the time of year when we're enjoying a tipple with friends, cooking heaps of delicious food and decking the halls.

The fire service has these messages to make sure your festive cheer doesn't go up in smoke:

- Kitchens are a fire hotspot, so take care while cooking festive fancies. Never leave cooking unattended and turn off appliances when not in use.
- Switch off fairy lights and unplug them before you go to bed or leave the house. Make sure they conform to the British Standard and never overload plug sockets.
- Be careful when drinking alcohol while smoking or cooking.
- Finally, make sure you have a working smoke alarm which is correctly fitted and works. And NEVER take the batteries out to power presents!

For the latest news, incidents and safety advice, or to contact us, log on to [www.cambsfire.gov.uk](http://www.cambsfire.gov.uk). Sign up to email alerts and find us on Twitter, Instagram, YouTube and Facebook.

## Quit Smoking



Do you want to keep your new year's resolution in 2017?

You do? Then let CAMQUIT help you to quit smoking this January.

We are a county-wide service that offers FREE advice and support to help smokers in Cambridgeshire to quit. We can offer you one-to-one appointments with a trained stop smoking advisor local to your home or workplace. Stop smoking medications are available on prescription and our advisors are there to help you combat your cravings and offer advice on routine changes to help you stay quit in 2017 and beyond! You are four times more likely to succeed using a service than going it alone so what have you got to lose?

If you are thinking about quitting in January contact CAMQUIT on 0800 018 4304 or visit [www.camquit.nhs.uk](http://www.camquit.nhs.uk) and start your journey to being Smokefree in 2017!

### Waterbeach Surgery

**Christmas 2016**

**Prescription requests by Monday 19<sup>th</sup> December please**

#### Christmas Closure times

**We will open as normal, except for**

**Monday 26<sup>th</sup> December – CLOSED**

**Tuesday 27<sup>th</sup> December – CLOSED**

**Monday 2<sup>nd</sup> January 2017 – CLOSED**

**If you need a doctor urgently when we are closed,  
please telephone 111**

# What's On

## December

- Mon 5<sup>th</sup> Santa's coming to your street! (*Scouts & Guides*) – See page 17 for details, 6-8pm
- Tues 6<sup>th</sup> Santa's coming to your street! (*Scouts & Guides*) – See page 17 for details, 6-8pm
- Thurs 8<sup>th</sup> Christmas Party with Acapella Group (*WI*) - St John's Church Room, 7.30pm
- Fri 9<sup>th</sup> Christmas Bingo (*Scouts*) - Scout Hut, 7.30pm
- Mon 12<sup>th</sup> Santa's coming to your street! (*Scouts & Guides*) – See page 17 for details, 6-8pm
- Tues 13<sup>th</sup> Santa's coming to your street! (*Scouts & Guides*) – See page 17 for details, 6-8pm
- Wed 14<sup>th</sup> 300 Slides and Music presented by Ken Drake (*Village Society*) - St. John's Church Room, 7.45pm
- Sat 24<sup>th</sup> Carols on the Green (*Community Association*) - Waterbeach Green, 6.30pm

## January

- Thurs 12<sup>th</sup> How Dogs are Taught to Smell Long-term Human Conditions by Geoff Lambert (*WI*) - St John's Church Room, 7.30pm
- Fri 13<sup>th</sup> Bingo (*Scouts*) - Scout Hut, 7.30pm
- Mon 16<sup>th</sup> Feast meeting (*Community Association*) - Community Room (Library), Waterbeach School, 7.00pm
- Thurs 19<sup>th</sup> New Year Social (*Gardening Club*) - St. John's Church Room, 7.45pm
- 19<sup>th</sup>- 21<sup>st</sup> Sleeping Beauty (*Community Players*) - Waterbeach School, 7.30pm and Saturday Matinee 2.30pm
- Sat 28<sup>th</sup> Jumble Sale (*Scouts*) - Scout Hut, 10.00am-1.00pm

## February

- Fri 3<sup>rd</sup> Race Night (*Toddler Playgroup*) - Beach Social Club, 7.30pm
- Fri 3<sup>rd</sup> Copy deadline for Spring edition of Beach News
- Thurs 9<sup>th</sup> AGM and Social Evening (*WI*) - St John's Church Room, 7.30pm
- Fri 10<sup>th</sup> Bingo (*Scouts*) - Scout Hut, 7.30pm
- Thurs 16<sup>th</sup> Fungus: Friend or Foe? by Joe McWilliams (*Gardening Club*) - St. John's Church Room, 7.45pm
- Wed 22<sup>nd</sup> Britain's Hidden Marine Life presented by Frances Dipper (*Village Society*) - St. John's Church Room, 7.45pm
- Sat 25<sup>th</sup> Beach News Spring edition published

Send your events in March, April and May 2017 for inclusion in the Summer edition of Beach News to [beachnews@waterbeach.org](mailto:beachnews@waterbeach.org) by 3<sup>rd</sup> February 2017.

*Waterbeach Community Association reserves the right to omit events at its discretion and without notice*

## COMMUNITY ASSOCIATION MEMBERS

1 <sup>ST</sup> WATERBEACH BROWNIES	Tiffany Langton - 01223 862548
1 <sup>ST</sup> WATERBEACH GUIDES	Holli Bielby - 01223 528383
1 <sup>ST</sup> WATERBEACH RAINBOWS	June Stephen - 07956 949964
32 <sup>ND</sup> CAMBRIDGE (WATERBEACH) SCOUT GROUP	William Moon - 01223 440259
BEACH BOWLS CLUB	Bill Clough - 01223 861386
BEACH SOCIAL CLUB	Geoffrey Donovan - 01223 571329
COMMUNITY ASSOCIATION CHAIRPERSON	Jacqui Rabbett - 01223 860993
COMMUNITY ASSOCIATION SECRETARY	Pam Clack - 01223 476601
HAPPY FOLKS CLUB	Stuart Atkins - 01223 862674
LANDBEACH BELL RINGERS	Barbara Le Gallez - 01223 860283
ROYAL BRITISH LEGION - WATERBEACH & LANDBEACH	Norman Foster - 01223 474622
ST. JOHN'S CHURCH	Rev. Paul Butler - 01223 860353
THE WAY PROJECT	Shelagh Robertson - 01223 860445
WASPS (WATERBEACH AFTER SCHOOL PLAY SCHEME)	Zoë & Wayne Badcock - 01223 861140
WATERBEACH & DISTRICT GARDENING CLUB	Jerry Cooper - 07785 912613
WATERBEACH ANGLING CLUB	Colin Brett - 01954 200956
WATERBEACH BADMINTON CLUB	Norman Setchell - 07565 298834
WATERBEACH BAPTIST CHAPEL	Martin Ensell - 01223 862494
WATERBEACH BRASS	David Pell - 01223 860396
WATERBEACH COLTS F.C.	Bernadette Sowden-Fletcher - 01223 566687
WATERBEACH COMMUNITY PLAYERS	Julie Petrucci - 01223 880023
WATERBEACH COMMUNITY PLAYGROUP	Jacqui Woods - 01223 440769
WATERBEACH DAY CENTRE FOR THE ELDERLY	Mary Longstaff - 01223 564666
WATERBEACH INDEPENDENT LENDING LIBRARY (WILL)	Maggie Crane - 01223 440560
WATERBEACH MILITARY HERITAGE MUSEUM	Adrian Wright - 01223 861846
WATERBEACH MOTHERS' UNION	Ingrid Tregoin - 07715 908694
WATERBEACH SALVATION ARMY	Colin Harrod - 01223 440190
WATERBEACH SCHOOL P.T.A	01223 718988
WATERBEACH TODDLER PLAYGROUP	Wayne Badcock - 07808 357729
WATERBEACH VILLAGE SOCIETY	Adrian Wright - 01223 861846
WATERBEACH WI	Sheila Lynn - 01223 860948
WATERBEACH WIVES GROUP	Sheila Gill - 01223 861999
WOODLAND TRUST – COW HOLLOW WOOD	Adrian Wright - 01223 861846

### Other useful numbers:

BEACHES COMMUNITY CAR SERVICE	07807 875878
COUNTY COUNCILLOR	Maurice Leeke - 01223 441562
DISTRICT COUNCILLOR	Ingrid Tregoin - 07715 908694
DISTRICT COUNCILLOR	Peter Johnson - 01223 560918 or 07947 475549
DOCTORS SURGERY – WATERBEACH	01223 860387
FIRE & RESCUE SERVICE - Non Emergency Calls	01223 376217
LANDBEACH VILLAGE HALL	Anne Bullman - 01223 860692
PARISH PATHS GROUP	D. Armstrong - 01223 861586
POLICE - Non Emergency Calls	101
ST LAWRENCE'S CATHOLIC CHURCH	01223 704640
VILLAGE CORRESPONDENT	Maggie Crane - 01223 440560
WATERBEACH PARISH COUNCIL	Parish Clerk - 01223 441338
WATERBEACH SCHOOL	01223 718988
WATERBEACH TURBARY CHARITY	Pam Gooding - 01223 861003
WATERBEACH UNITED CHARITIES	Pam Gooding - 01223 861003



# Waterbeach Barracks and Airfield

Urban&Civic

The former barracks and airfield at Waterbeach offer a range of community facilities for local groups including:

- Sports Hall
- Studio area
- Squash courts
- Community rooms.

## Military Heritage Museum

Now open from 11am to 4pm on the first Wednesday and Sunday of each month and by appointment with Adrian Wright (01223 861846).

## Find out more

Urban&Civic hold regular events to keep you informed and give you the opportunity to shape the future development of this special place. If you or your local group would like to find out more, meet us for a coffee and have a tour of the site, contact Rebecca Britton on 07739 339 889 or email us: [rbritton@urbanandcivic.com](mailto:rbritton@urbanandcivic.com)

[waterbeachbarracks.co.uk](http://waterbeachbarracks.co.uk)







Chinese New Year 2016



Autumn - October 2016



Animal Experience - February 2016



Feast - June 2016



Baking - March 2016



Messy Play - 2016



Feast Parade - June 2016



# Merry Christmas



Little Stars Day Nursery



@littlestarscamb

[www.littlestarscambridge.co.uk](http://www.littlestarscambridge.co.uk)

Buchanan Centre, Capper Road, Waterbeach, Cambridge, CB25 9LY

01223 861911